

ALLEN

Activity at the end of September 2024



ALLEN

Bruno Benoliel
Deputy Chief Executive Officer

Paris, October 24th, 2024



BREAKDOWN OF TURNOVER PER GEOGRAPHICAL AREA AS AT SEPTEMBER 30TH 2024

COUNTRY	YTD				Change			
	2023	%	2024	%	Published	Change in scope	Forex	Organic, excl. Forex effect
FRANCE	963.5	31.7%	1 019.2	32.7%	5.8%	0.0%	0.0%	5.8%
IBERIC	278.2	9.2%	306.2	9.8%	10.1%	1.9%	0.0%	8.2%
ITALY	228.7	7.5%	252.6	8.1%	10.4%	0.0%	0.0%	10.4%
GERMANY	278.0	9.2%	248.0	8.0%	-10.8%	0.3%	0.0%	-11.1%
UK	240.1	7.9%	216.7	7.0%	-9.8%	0.0%	2.0%	-11.8%
BENELUX	169.5	5.6%	170.4	5.5%	0.6%	0.0%	0.0%	0.6%
SCANDINAVIA	134.4	4.4%	122.5	3.9%	-8.9%	0.0%	0.3%	-9.2%
EASTERN EUROPE	81.3	2.7%	98.0	3.1%	20.6%	22.4%	3.6%	-5.4%
SWITZERLAND	46.6	1.5%	40.0	1.3%	-14.1%	0.0%	1.7%	-15.8%
EUROPE (W/O FRANCE)	1 456.7	48.0%	1 454.4	46.7%	-0.2%	1.7%	0.6%	-2.4%
NORTH AMERICA	361.3	11.9%	368.4	11.8%	2.0%	2.9%	-0.5%	-0.4%
ASIA PACIFIC	241.0	7.9%	261.5	8.4%	8.5%	11.1%	-3.1%	0.5%
OTHERS	14.6	0.5%	13.2	0.4%	-9.5%	0.0%	-3.2%	-6.3%
TOTAL	3 037.2	100%	3 116.7	100%	2.6%	2.0%	0.0%	0.6%



BREAKDOWN OF TURNOVER PER GEOGRAPHICAL AREA AS AT SEPTEMBER 30TH 2024

COUNTRY	Q3 only				Change			
	2023	%	2024	%	Published	Change in scope	Forex	Organic, excl. Forex effect
FRANCE	308.8	31,2%	327.1	32.4%	5.9%	0.0%	0.0%	5.9%
IBERIC	89.6	9.1%	99.8	9.9%	11.5%	2.0%	0.0%	9.5%
ITALY	74.1	7.5%	80.0	7.9%	8.0%	0.0%	0.0%	8.0%
GERMANY	93.9	9.5%	79.3	7.9%	-15.5%	0.2%	0.0%	-15.7%
UK	79.1	8.0%	71.0	7.0%	-10.2%	0.0%	1.5%	-11.7%
BENELUX	55.3	5.6%	54.1	5.4%	-2.2%	0.0%	0.0%	-2.2%
SCANDINAVIA	37.9	3.8%	34.8	3.4%	-8.1%	0.0%	2.1%	-10.2%
EASTERN EUROPE	28.3	2.9%	35.8	3.5%	26.2%	27.4%	3.0%	-4.2%
SWITZERLAND	14.7	1.5%	12.4	1.2%	-15.5%	0.0%	0.8%	-16.4%
EUROPE (W/O FRANCE)	472.8	47.8%	467.2	46.3%	-1.2%	2.1%	0.6%	-3.9%
NORTH AMERICA	122.7	12.4%	121.8	12.1%	-0.7%	0.1%	-1.7%	0.9%
ASIA PACIFIC	80.4	8.1%	87.7	8.7%	9.1%	11.7%	-1.5%	-1.1%
OTHERS	4.7	0.5%	4.9	0.5%	4.9%	0,0%	-5.3%	10,2%
TOTAL	989.3	100.0%	1 008.7	100%	2.0%	1.9%	0.0%	0.1%



BREAKDOWN OF TURNOVER PER SECTOR (AS A % OF REVENUE) AS AT SEPTEMBER 30TH 2024

Aerospace, Defense, Security & Naval

Market trend → 23.2%

Aerospace

Airbus, Airbus DS, Rolls-Royce, Safran, Thales, Dassault Aviation, Leonardo, CNES, Arianegroup...

Defense, Security & Naval

Airbus DS, Thales, MBDA, Naval Group, Leonardo...

Energy

EDF, Total Energies, Technip, Engie, ENI, Chevron, Siemens, GE...

Energy, Life Sciences & Industrial Equipment

Market trend → 29.7%

Life Sciences

Sanofi, Novartis, Roche, Johnson&Johnson, Merck, Pfizer...

Industrial equipment & Electronics

ASML, ABB, Valmet, Infineon, HP, Saint-Gobain, Kone...

Telecoms

Bouygues, Orange, Ericsson, Telefonica, Nokia...

Automotive & Rail

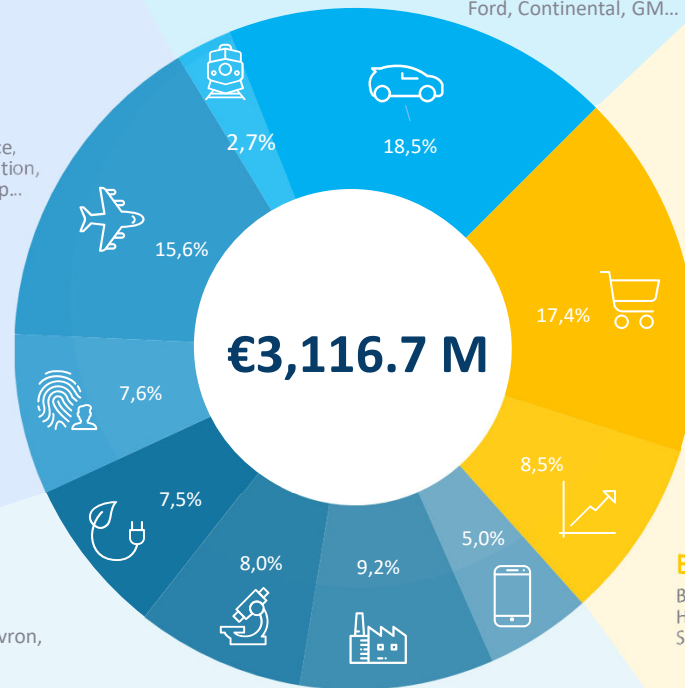
Market trend → 21.2%

Rail

Alstom-Bombardier, Siemens...

Automotive

Stellantis, Volkswagen, Renault, Volvo, ZF, BMW, Ford, Continental, GM...



Retail, Services, Media & Public sector

Decathlon, Amadeus, Carrefour, Accor Hotels, Manpower, Ebay, Prisa, Canal+...

Service, Retail, Bank Media & Public sector
Market trend → 25.9%

Bank, Finance & Insurance

BNP Paribas, Société Générale, Morgan Stanley, HSBC, La Caixa, Crédit Agricole, BPCE, Reliance, Axa, Santander, Intesa...

Appendice

Bruno Benoliel
Deputy Chief Executive Officer

Paris, October 24th, 2024



BREAKDOWN OF TURNOVER PER GEOGRAPHICAL AREA AS AT SEPTEMBER 30TH 2024

COUNTRY	Q1 2024		Q2 2024		Q3 2024	
	Published	Organic, excl. Forex effect	Published	Organic, excl. Forex effect	Published	Organic, excl. Forex effect
FRANCE	6.0%	6.0%	5.4%	5.4%	5.9%	5.9%
IBERIC	7.4%	5.5%	11.5%	9.6%	11.5%	9.5%
ITALY	13.9%	13.9%	9.4%	9.4%	8.0%	8.0%
GERMANY	- 7.7%	- 8.0%	- 9.0%	- 9.3%	-15.5%	-15.7%
UK	- 10.7%	- 13.4%	- 8.4%	- 10.2%	-10.2%	-11.7%
BENELUX	2.3%	2.3%	1.4%	1.4%	-2.2%	-2.2%
SCANDINAVIA	- 8.2%	- 7.8%	- 10.2%	- 10.0%	-8.1%	-10.2%
EASTERN EUROPE	25.0%	- 5.2%	10.5%	- 6.8%	26.2%	-4.2%
SWITZERLAND	- 15.0%	- 18.7%	- 11.6%	- 12.1%	-15.5%	-16.4%
EUROPE (W/O FRANCE)	0.6%	- 1.9%	0.1%	- 1.6%	-1.2%	-3.9%
NORTH AMERICA	1.4%	- 3.5%	5.2%	1.4%	-0.7%	0.9%
ASIA PACIFIC	10.0%	4.0%	6.4%	- 1.3%	9.1%	-1.1%
OTHERS	- 18.9%	- 17.4%	- 13.6%	-10,7%	4.9%	10.2%
TOTAL	3.1%	0.8%	2.8%	1.0%	2.0%	0.08%

ALLEN

Activity at the end of September 2024

Contact

comfi@alten.fr

<https://www.alten.com/fr/investisseurs/>

T : +33 (0)1.46.08.71.79

40 av. André Morizet
92513 Boulogne-Billancourt Cedex

